



ENGINEERED ENTRY FLOOR SYSTEMS

1110 Thalia Ave, Youngstown, OH 44512 800-233-4575 www.SpaceLinks1.com

PowerLinks Floor Mats & Frames product specification

Contents:

I.	Specification introduction	Page 1
II.	3 part specification	Pages 2-4
III.	Technical drawings and properties	Pages 5-6
IV.	Aluminum Trim	Page 7

PRODUCT PRESENTATION

Perfect for retail and other high traffic entryways and cart corrals, patented and patent pending PowerLinks utilizes our unique open-weave, grid-rib design. The resulting matting grid is the most effective of its kind, scraping then trapping dirt and moisture. The grid-like top surface ribs scrape shoe bottoms with every step, while the open-weave design allows dirt contaminants to collect beneath the surface. This action helps to reduce slips and falls within the facility. PowerLinks has the option of being surrounded by aluminum frames or of panel sections contained within anodized aluminum frames. Each layout is custom-engineered to accommodate doors and specific floor plans.

USES and APPLICATIONS

PowerLinks is ideal for entryways where an upscale appearance and maximum effectiveness is desired. PowerLinks is ideal for use in all high traffic facilities, including retail big box with shopping carts, office buildings, institutional buildings, banks, retailers and apartment buildings.

INSTALLATION OPTIONS

PowerLinks can be surface mounted or recessed into the floor. The grid is approximately .5" high and is surrounded by anodized aluminum ramps (where surface mounted) and dividers. For recessed applications, the well should be .5" deep. In all cases, the mounting surface should be a hard, smooth surface.

MATERIALS and FINISHES

The PowerLinks system consists of flexible, injection-molded, PVC panels surrounded by 0.75" x 0.5" anodized aluminum frames and or 2" x 0.5" anodized aluminum ramps. Each system is custom-engineered to fit the application. Standard colors for vinyl include Black, Grey, Brown and Green Customization options include custom-colored vinyl mat panels, frames and ramps. Frames and ramps can also be custom fabricated and bent to a specified radius.

CODES and CERTIFICATIONS

PowerLinks features a 3 year prorated warranty. Call for details.

ENVIRONMENTAL DATA

Section material is 100% PVC
Section can be recycled.
Frame can be recycled

OPERATION and MAINTENANCE

- 1.) Use a wet/dry vacuum over the PowerLinks mat panel to prevent dirt from building underneath.
- 2.) To bring back the mat panels' original luster mop the traffic surface, using a neutral cleaner, mop (left to right) parallel to the grid.
- 3.) Remove the PowerLinks panels and use a wet/dry vacuum or mop to remove all dirt and debris from the empty wells.



ENGINEERED ENTRY FLOOR SYSTEMS

1110 Thalia Ave, Youngstown, OH 44512 800-233-4575 www.SpaceLinks1.com

SPACELINKS ENTERPRISES, FLOOR MATS & FRAMES

SPACE LINKS DIVISION BOARDMAN MOLDED PRODUCTS, INC.

Three part specification Section 12484 - Entrance Systems

PART 1 - GENERAL

1.01 Summary

A. This section includes the following types of entrance flooring systems:

1. Floor Mats & Frame Assemblies
2. Floor Entryway Mats & Frame Assemblies

1.02 References

- A. American Society for Testing and Materials (ASTM)
- B. The Aluminum Association
- C. Floor mats frames and floor entryway grids shall be compliant with the requirements of the Americans with Disabilities Act (ADA).

1.03 Submittals

- A. Product data for each type of floor entryway floor mats and frame specified, including manufacturer's specifications and installation instructions, details of construction relative to adjacent materials, dimensions of individual components, profiles and finishes.
- B. Shop drawings in sufficient detail showing layout of grids and frame specified including manufacturer's specifications and installation instructions, details of product construction, product construction relative to adjacent materials, direction of traffic, profiles, anchors and accessories.
- C. Samples for verification purposes: Submit an assembled section of floor grids and frame members or carpet insert with selected material and colors for exposed floor grids, frame and accessories required.
- D. Maintenance data in the form of manufacturer's printed instructions for cleaning and maintaining floor grids.

1.04 Quality Assurance

Refer to material technical specification information chart below. (Page 5)

1.05 Delivery, Storage and Handling

- A. Deliver materials to the project site ready for use and custom fabricated in as large sections and assemblies as designed, in unopened original factory packaging clearly labeled to identify manufacturer. All vinyl sections must lie flat for a minimum 24 hours at room temperature before installation.

1.06 Project Conditions

- A. Field measurements: Check actual openings for grids by accurate field measurements before fabrication. Record actual measurements on final shop drawings. Coordinate fabrication schedule and exact dimensions with construction progress and factory to avoid delay of work.



ENGINEERED ENTRY FLOOR SYSTEMS

1110 Thalia Ave, Youngstown, OH 44512 800-233-4575 www.SpaceLinks1.com

- B. For recess application coordinate frame installation with concrete construction to ensure recess and frame anchorage are accurate. Defer frame installation until building enclosure is complete and related interior finish work is in progress.
- C. For surface application a frame of beveled threshold ramps and stringers are anchored to the floor with the provided anchor expansion bolts. Defer frame installation until building enclosure is complete and related interior finish work is in progress.

PART 2 - PRODUCTS

2.01 Manufacturers

- A. Drawings and specifications are based on manufacturer's literature from Space Links International, 1110 Thalia, Youngstown, OH 44512; telephone: (330)-788-2400, fax: 330-788-9665, <http://www.spacelinks1.com>, unless other wise indicated. Other manufacturers must comply with the minimum levels of material and detailing indicated on the drawings and specified herein.

2.02 Materials

- A. Aluminum ASTM B 221, alloys 6063-T5, 6052-T5, for dividers, stringers and ramps
- B. Anodized Aluminum: Clear and Selected Standard Colors meeting ASTM B 221 standard.
- C. Injection molded PVC

2.03 Floor Grid and Frame Assemblies

All grids are patented or patent pending, both domestically and international.

- A. **PowerLinks aluminum frame** shall be anodized extruded 6063-T5 aluminum alloy, fastened to the floor using the anchor bolts supplied by the manufacturer. Stringers, dividers and ramps will be predrilled for ease of installation as offered by manufacturer. Frame colors shall be Bright Gold, Black and Clear Anodized Aluminum (*select one*). See Aluminum Trim Page 7.
 - 1. **Recessed Frame** shall be anodized extruded 6063-T5 aluminum alloy stringers and dividers of 0.5" wide exposed surface and depth of 0.5". Frame colors shall be Bronze, Gold, Black and Clear Anodized Aluminum (*select one*). See Aluminum Trim Page 7.
 - 2. **Surface mounted frame** shall be anodized extruded 6063-T5 aluminum alloy ramps surrounded by 2" wide exposed surface and depth of 0.5", stringers and dividers of 0.75" wide exposed surface and depth of 0.5". Frame colors shall be Bronze, Gold, Black and Clear Anodized Aluminum (*select one*). See Aluminum Trim Page 7.

2.04 Floor Mat Sections

- A. **PowerLinks** patented sections shall be manufactured from flexible PVC in an open-weave, heel resistant, grid-rib design that allows dirt, water, etc., to be easily scraped from foot traffic, fall through floor grid and be contained. The design of the sections are nominal .250" square ribs, with nominal .230" x .312" openings, over .250" half rounds 1.250" apart. The bottom patented Power Pegs combined with the patented mat retainer, offers additional support and longevity. PowerLinks standard colors shall be Green, Grey, Brown and Black.

(Graphic technical specification detail information in can be found on page 5 and 6)

PART 3 - EXECUTION

3.01 Examination

- A. **Verification of conditions:** Examine areas and conditions under which work is to be performed and identify conditions detrimental to proper or timely completion.



ENGINEERED ENTRY FLOOR SYSTEMS

1110 Thalia Ave, Youngstown, OH 44512 800-233-4575 www.SpaceLinks1.com

1. Do not proceed until unsatisfactory conditions have been corrected.

3.02 Preparation

- A. Manufacturer shall offer assistance and guidance to ensure a proper installation.

3.03 Installation

- A. Install the work of this section in strict accordance with the manufacturer’s recommendations.
- B. Coordinate top of panel/frame surfaces with bottom of doors that swing across to provide ample clearance between door and panel/frame.
- C. Defer installation of floor panels/frames until time of Substantial Completion of Project.

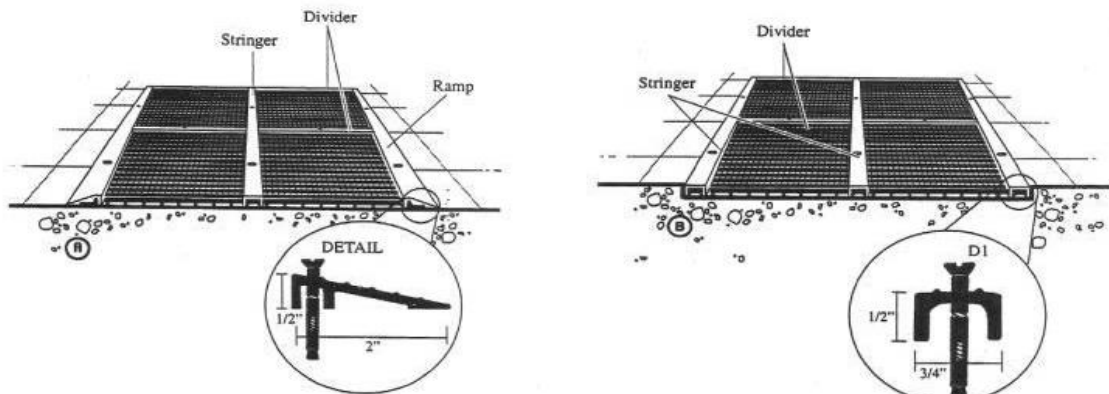
3.04 Cleaning

- A. Clean the mat panel and frame surface and recessed well with wet/dry vacuum and mopping as frequently as possible to reduce the effects of accumulated soiling that may hinder performance and lifetime.

3.05 Protection

- A. After completing required frame installation and concrete work, provide temporary filler of plywood or fiberboard in recesses, and cover frames with plywood protective flooring. Maintain protection until construction traffic has ended and Project is near time of Substantial Completion.

Technical specifications and information



SPACE LINKS

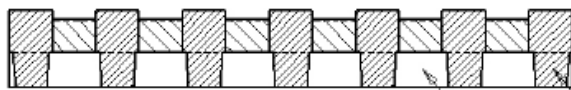
ENGINEERED ENTRY FLOOR SYSTEMS

1110 Thalia Ave, Youngstown, OH 44512 800-233-4575 www.SpaceLinks1.com

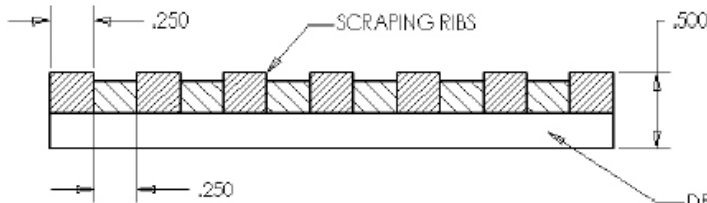
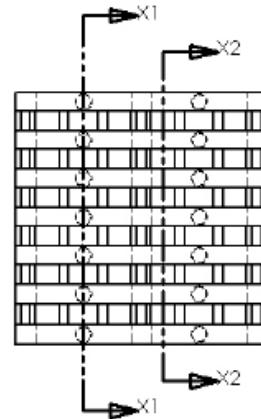


Place 1/4" half round ribs on the floor.
Square 1/4" ribs are walking surface.

X1



SUPPORT PEGS
DEBRIS COLLECTION AREA

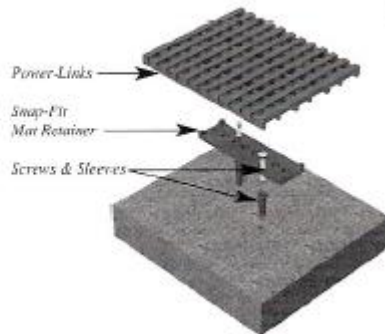


X2

DEBRIS COLLECTION AREA

Power-Links Mat Retainer

- Allows for easy removal of Power-Links for cleaning purposes
- Power-Links snap-fits easily back into place
- Helps keep the mat from moving under heavy cart traffic





ENGINEERED ENTRY FLOOR SYSTEMS

1110 Thalia Ave, Youngstown, OH 44512 800-233-4575 www.SpaceLinks1.com

Technical Support

Test Results - Properties and Standards

Please call our Customer Service Department for additional information.

VINYL PROPERTIES	
Thickness	15/32"
Hardness, Shore 'A', Instant ASTM D 2240	85
Specific Gravity, ASTM D 792	1.36
Tensile Strength, ASTM D 412	2697 psi
Elongation % at Break, ASTM D 412	375psi
100 % Modulus, ASTM 412	1572 psi
Tear Stength, ASTM D 624	384 ppi
Low Temperature Brittleness, ASTM D 1043	-37°C
Static Coefficient of Friction, ASTM D 2047	Dry Leather = .79 Wet Leather = 1.04 Values greater than .5 are considered slip-resistant

ALUMINUM PROPERTIES	
Optional Aluminum Frame Composition	6063 – T5
Lineals, Dividers and Ramps	Outdoor, all-weather anodized aluminum
Colors Available (See trim page)	Clear, Black, Bronze, Gold
SpaceLinks are covered by these Patent Numbers: 4,796,399 / 5,882,764 / 5,958,538 / 5,992,105 / 6,042,915 / 6.068,908. Other domestic and international patents pending.	

SPACELINKS

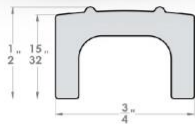
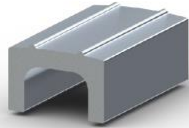
ENGINEERED ENTRY FLOOR SYSTEMS

1110 Thalia Ave, Youngstown, OH 44512 800-233-4575 www.SpaceLinks1.com

Aluminum Trim

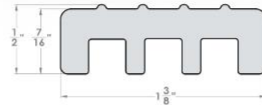
Dimensions in names may refer to nominal height of related flooring, not actual dimension of trim piece.

U-Divider 1/2"



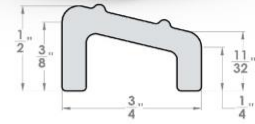
Satin, Black, Bronze, Brass

HD Divider 1/2" x 1³/₈"



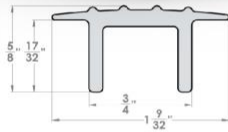
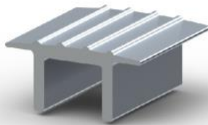
Satin

Transitional Divider 1/2" to 1/4"



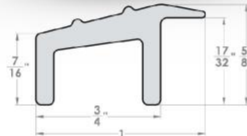
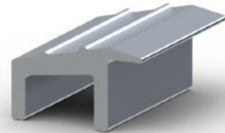
Satin

TopHat Divider 1/2"



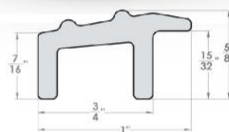
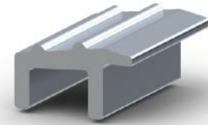
Satin, Black, Bronze

DL Transitional Overhang 1/2" to 7/16"



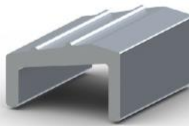
Satin

PL Transitional Overhang 1/2" to 7/16"



Satin

DL PL Transitional Divider 1/2"



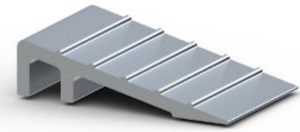
Satin

3" HD Ramp 1/2" x 3"



Satin

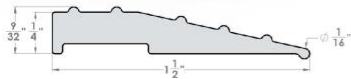
2" Ramp 1/2" x 2"



Satin, Black, Bronze

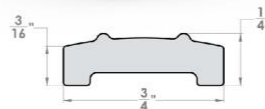
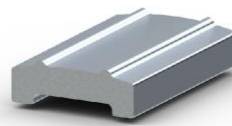
Pro Ramp 1/4" x 1 1/2"

Satin



Pro Divider 1/4" x 3/4"

Satin



SPACELINKS
ENGINEERED ENTRY FLOOR SYSTEMS
800-233-4575 ex. 114